



"If you are not astonished by quantum mechanics then you have not understood it".

Niels Bohr

Abstract:

The Smart App is a mobile phone application known as the Smart App. The Smart app utilises a variety of nature's own harmonic frequencies. We have found these natural frequencies to be beneficial in harmonizing functionality as demonstrated by the renowned Biowell device. Encouraging and significant responses have also been detected in body fluids. Fruity Juices, non-alcoholic and alcoholic beverages where also reviewed with positive results. Drinking water was also used as a medium for in-depth studies and was found to beneficially become crystalline and restructured. Ultra violet spectroscopy was performed in these samples covering the range of 200 to 800 nm and distinctive peaks around the 277 nm were observed that confirm the existence of an exclusion zone (EZ) as proposed by Gerald Pollack. The Smart App is able to transfer spinning energy among living biological systems, and in doing so, it greatly contributes to improve the taste of beverages as well as improving cellular hydration and systemic microcirculation.

Introduction:

The Smart App is embedded with nature's harmonizing frequencies and vibrations ranging from 256 Hz to 528 Hz; when the Smart App program is played, nature's own vibrational frequencies are transferred through the light and the sound waves emitted from the smart phone. Playing the Smart App, for a minute, over any cup or glass containing any liquid including water, fruit juice, alcohol or even beverages, the vibration of the Smart App is transferred and absorbed by the molecules within the matrix of these liquids. The vibrational frequencies create a distinctive improvement in the taste and flavor of the liquid. The consistency and viscosity of the liquid become rounder and smoother. An increase in enthalpy or heat content has also been noted, which allows for the release of natural free energy¹. It is widely known that natural energy provides strength to muscles and tissues. This becomes evident through kinesiology testing.

The Smart App's frequencies have the capacity to harmonize vibrations from man-made electromagnetic non ionizing radiation emanating from WI-FI, radio waves, microwaves, Smartphones, computers, etc. The Smart App frequencies induce harmony by attenuating the effect of the disturbing radiation emitted by electromagnetic frequencies (EMFs). Non-ionizing radiation refers to any type of electromagnetic radiation that does not carry enough energy per quantum (photon energy) to ionize atoms and molecules—that is, to completely remove an electron from an atom and/or a molecule².

Electromagnetic radiation and their derived frequencies (EMFs) are silent and invisible pollutants, which surround us in our daily lives. These invisible pollutants have become part of everyday life as we use the convenience of electrical appliances such as, TV monitors, computers, microwaves, WI-FI, GPS locators, Mobile appliances etc. The Smart App allows anyone to surround themselves with nature's own frequencies despite the presence of high levels of EMFs. It is imperative to understand that we live in a very chaotic electromagnetic environment^{3,4}. Modern life has brought us many conveniences but has also brought us a host of new electromagnetic frequencies that have only been recently introduced into the span of human time on earth. The advent of electric power transmission, overhead cables, radio waves, television waves, microwaves, wireless phones, Wi-Fi, computers, mobile phones and other electric appliances and devices of modern life have created a very chaotic electromagnetic environment^{3,4}. One can discover from a simple kinesiology muscle test that these invisible pollutants can have a detrimental effect on the human body.

Figure 1. shows the results of experiments conducted at the Hado Institute in Tokyo Japan that were done under the supervision of Hiro Emoto, son of the late Masaru Emoto, that show the effect of the Smart App on water before and after the Smart App was used. The images shown reflect the resulting water crystal after using the Smart App results in a hexagonal structure with angles of 120 degrees.



Figure 1. The Smart App created a bio-field within the non-structured 'dead' water; after the Smart App was played for 1 minute. One can recognise the resulting cluster becomes hexagonal and thus energized with ions.

According to Gerald Pollack, Professor of Bioengineering and his research team at the University of Washington, non-structured water otherwise referred to as dead water lacks what he defined as the exclusion zone (EZ)⁵. The EZ has been defined as the fourth state of water given by its gel like structure where the molecular structure of water becomes H_3O_2 carrying a negative electrical charge⁶. EZ water is therefore alkaline and thus maintaining this state of alkalinity and negative charge appears to be important for optimal health⁶. G Pollack proposed that water could be optimized in a variety of different ways, by injecting light energy or physical energy into the water by vortexing, for example. This is fairly easy using magnets. Reversing the vortex every few seconds may even generate more energy⁶. This is exactly what has been done with the Smart App.

We have conducted spectroscopic experiments at the Molecular and Cellular Biology Department from the Burzynski Institute in Houston Texas with Dr. Elwira Ilkowaska Musial Director of Research, using a UV 160 Shimadzu spectrophotometer and scanning in the range of 200 nm to 800 nm, and have shown that when tap water is exposed to the action of the Smart App, a distinctive peak of absorption is shown at 277 nm pointing towards the existence of the EZ as proposed by G Pollack. This is of great significance as we can say that the App is able to induce the formation of an EZ as seen by the spectrum in Figures 2A and 2B.

Figure 2A shows the spectrum obtained from running tap water before the action of the Smart App, thus it becomes a negative control for the experiment that was repeated 4 times under the same room conditions.

Figure 2B on the other hand, shows the effect of the Smart App after playing over tap water for one minute. As it can be seen a distinctive peak of absorption shows at 277nm. Thus the Smart App is able to convert non-structured 'dead' water into structured living water.

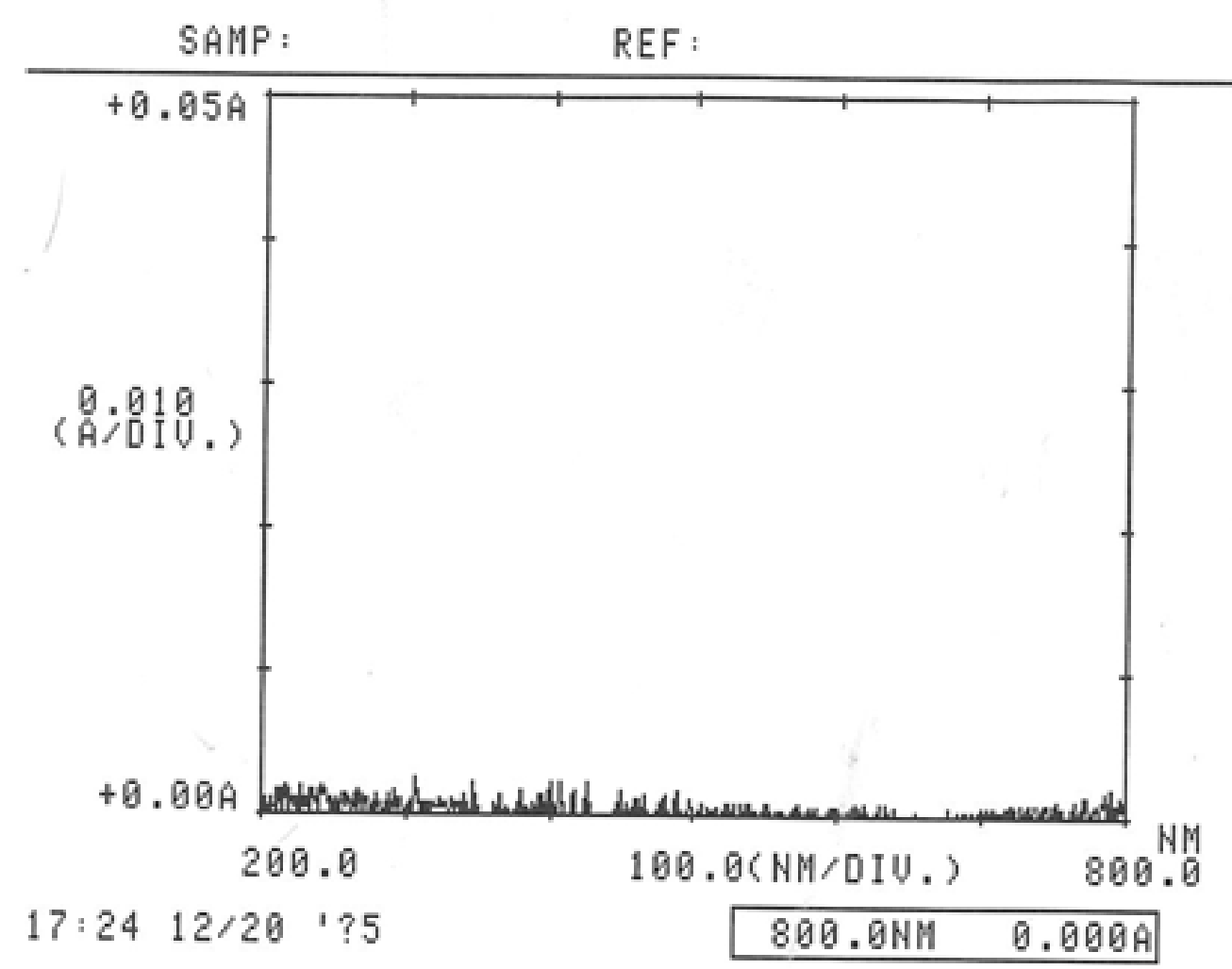


Figure 2A. Spectra obtained from tap water before the action of the Smart App. Water was collected from the tap at the lab and their spectrum was measured in the range of 200nm to 700nm. No significant peaks were observed.

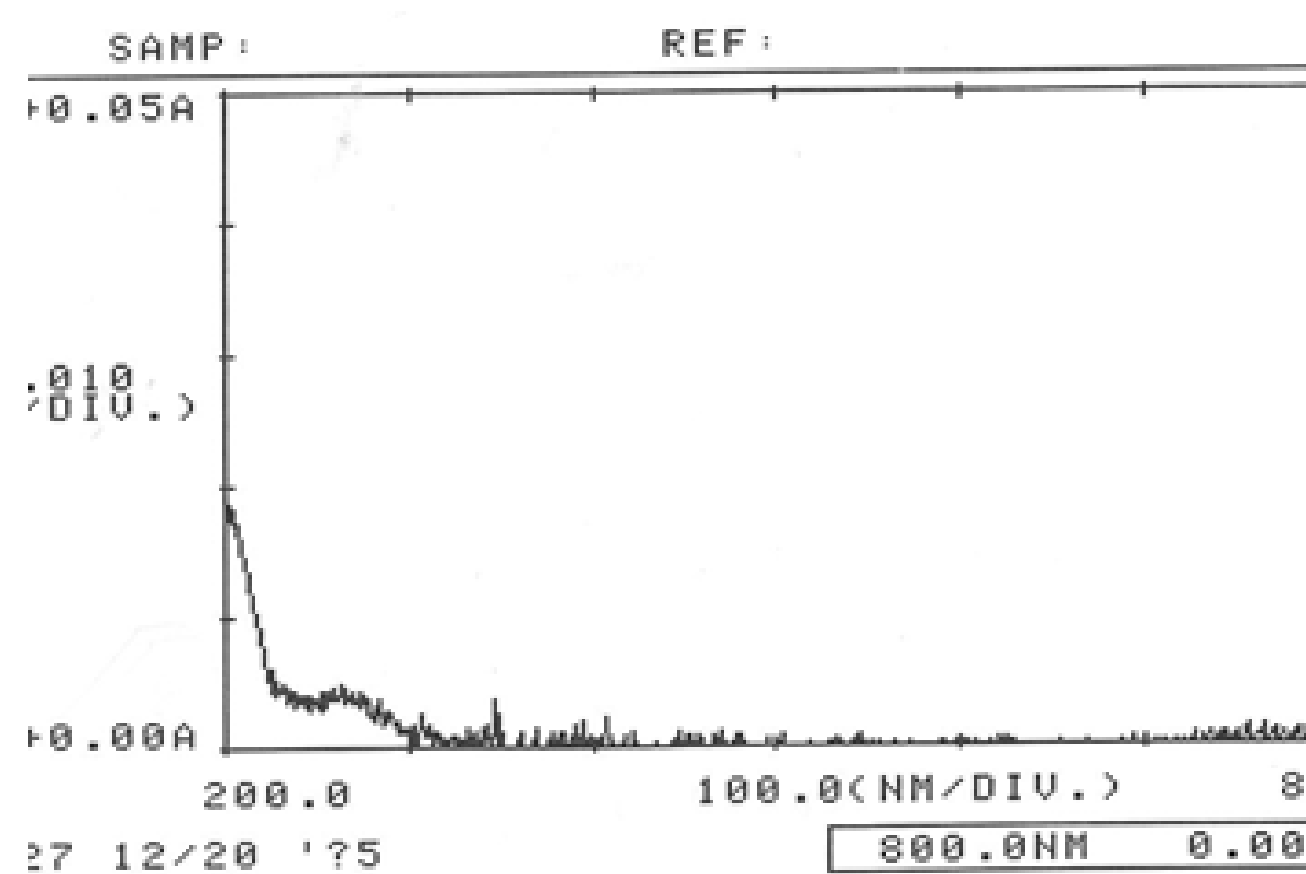


Figure 2B. Spectra obtained from tap water after exposure to the Smart App. Water was exposed for one minute to the action of the Smart App and a distinctive peak was observed at 270 nm, which matches with the presence of an EZ.

Figure 3A. Before the Smart App on Vodka. Spectrum of straight vodka prior to the action of the Smart App. The Hydroxyl Group (OH) of ethanol has its maximum absorbance at a wave length of 210 nm as seen in this figure. Pure vodka is varies in alcohol by volume (ABV), ranging from 37.5% to 95% ABV depending on the country where it is made. The spectra from the one used in this experiment was 60% ABV.

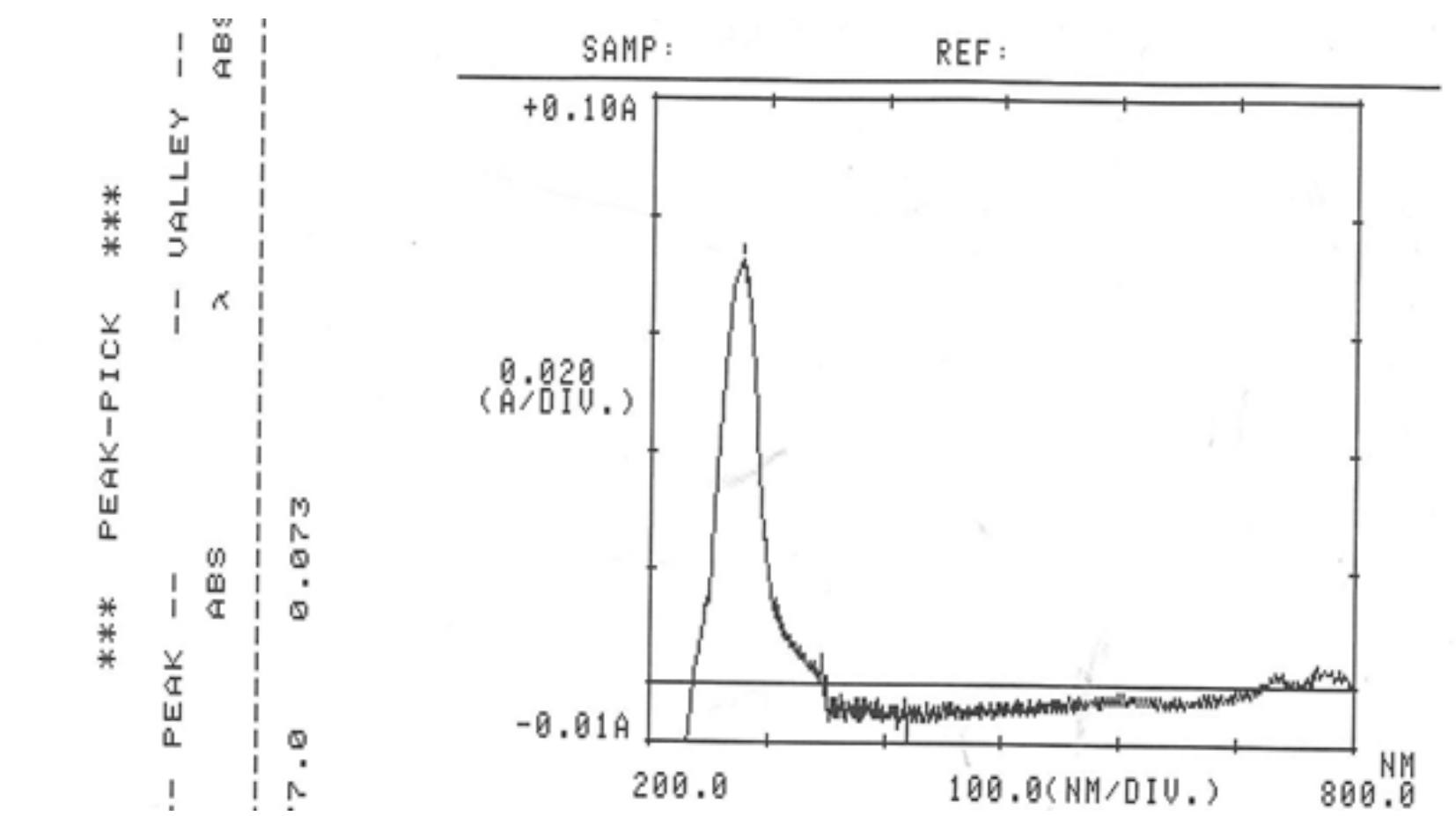


Figure 3B. Vodka After the Smart App. Effect of the Smart App after exposure of straight vodka (60% ABV) to the action of the Smart App. The maximum absorption is at 210 nm the same as the sample shown in figure 3B, however the resulting peak in this figure is higher and it has a shoulder that is absent in the previous in the control shown in figure 3A, indicating that there is another moiety that is present due to the action of the Smart App.

Based on these results we have can propose that, when water is exposed to the Smart App for just one minute, the frequency of the bio-field generated by the Water APP, allows for the angle formed by the atoms of Hydrogen of the molecule of water to open up from 104.5° to an angle of 109.5° allowing for the formation of a pyramid like structure, which allows for hexagonal clusters of water to be formed, as illustrated in **Figure 4**. The molecule that makes this possible could well be the H_3O_2 structure as stated by G Pollack⁵.

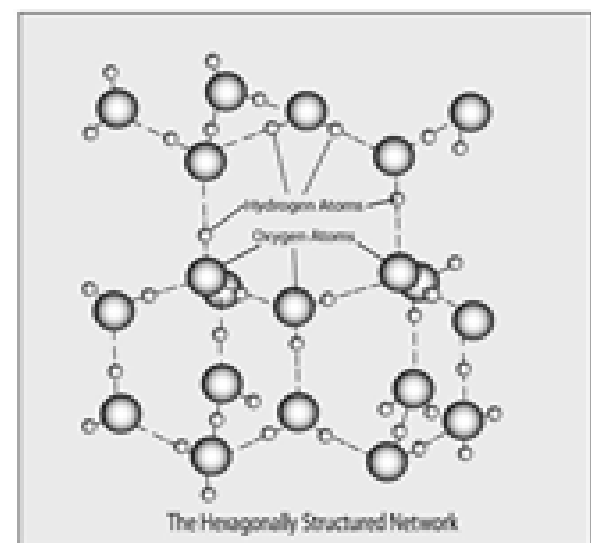
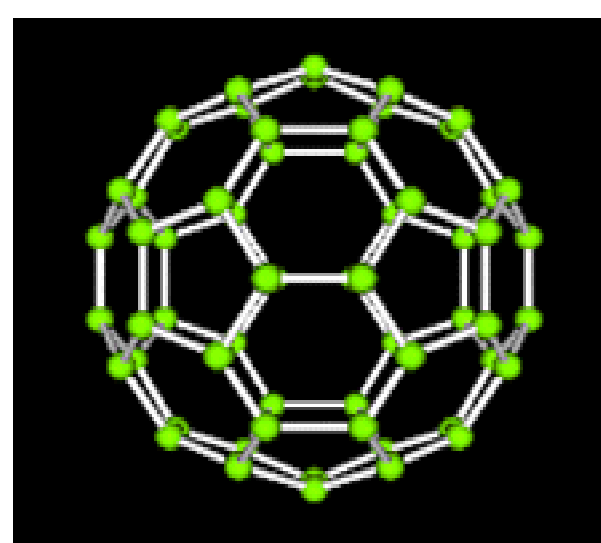


Figure 4. Representation of the water clusters formed with energized hexagonal water. The spherical shape shown is formed with 32 molecules of water, resulting in a truncated structure. To allow for a completely spherical structure another 5 molecules of water are required, resulting in a cluster made of 37 molecules of water. The resulting structure is highly energized and thus is known as living water, thus bio-water.

Water Structure and its implications.

Normal "unstructured" water is known as H_2O . Molecular structure refers to the way molecules are bound together. Molecules are like building bricks, they can be placed in a variety of ways to form a wide variety of structures. Recent work by Prof. Gerald Pollack's team at the University of Washington in the USA have demonstrated that the chemical formula for water is in fact H_3O_2 since a sole molecule of water does not exist as such due to the electronegativity of the atom of Oxygen and the inductive effect of the atom of Hydrogen. Therefore two molecules are needed to form molecular structure. Prof. Pollack's team has also proven that structured water forms an exclusion zone (EZ) made of many layers of H_3O_2 water molecules, as seen in **Figures 5 and 6**.

Unstructured Water The Hydrogen Bond and the 104.5° Angle.

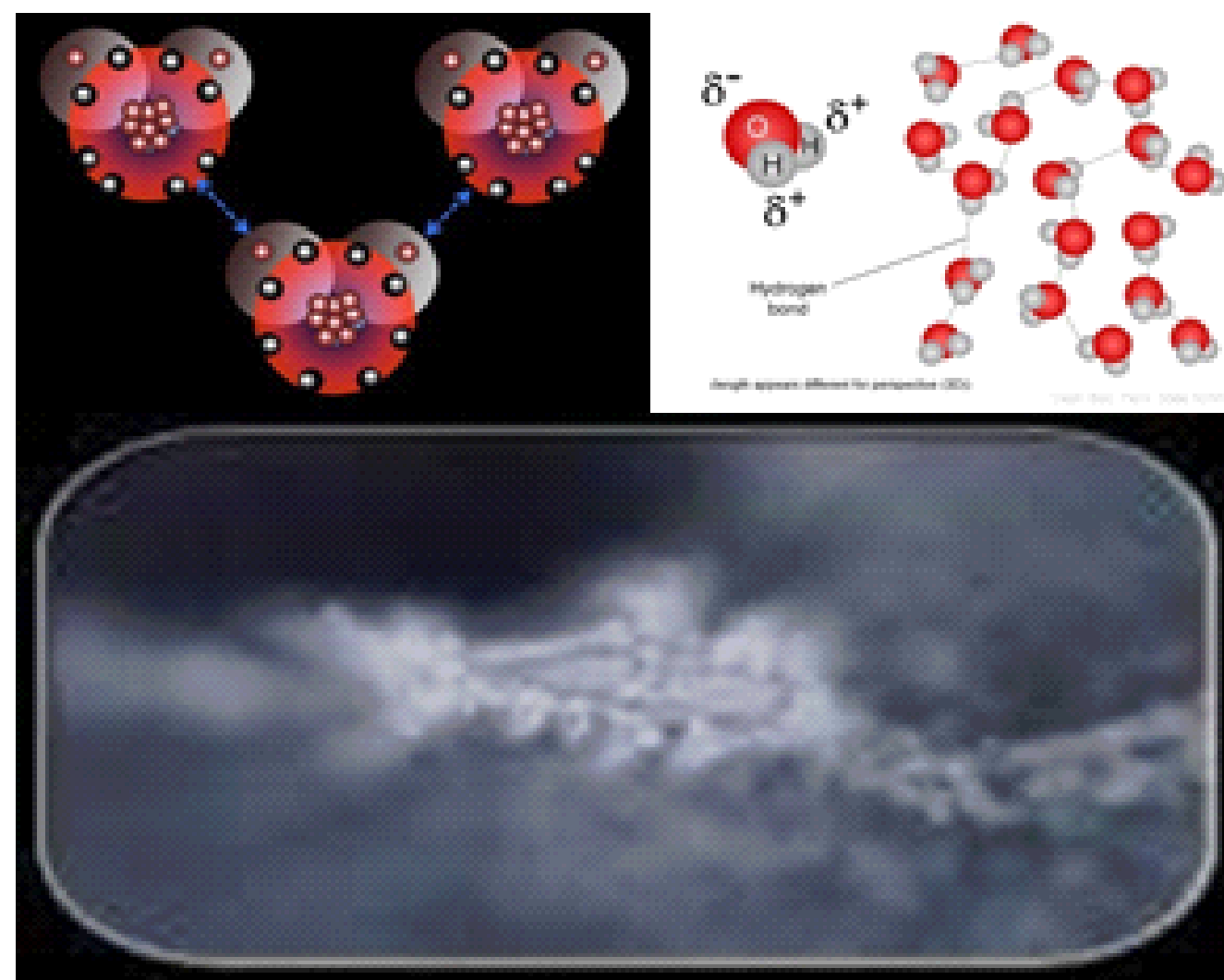


Figure 5: Crystal representation of the non-structured shape of the molecule of water showing the formation of the 104.5° angle and the resulting linear structure of the interaction of water molecules due to the Hydrogen bond that is formed among them.

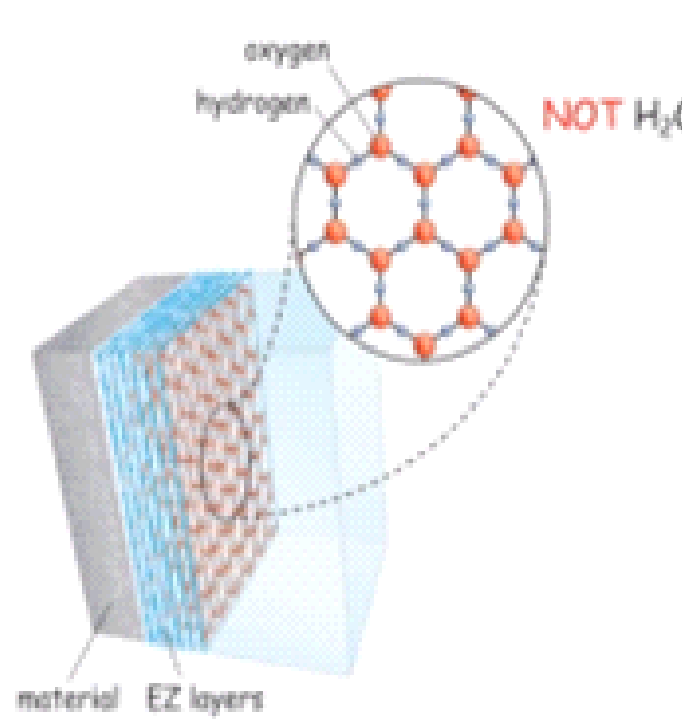


Figure 6. Hexagonal structured crystal sheet H_3O_2 molecular level. Structured Water forms (honeycomb) hexagonal sheets very similar to ice. Structured Water (liquid crystalline) is H_3O_2 the fourth phase of water. It's a transition stage between liquid water and ice⁵.

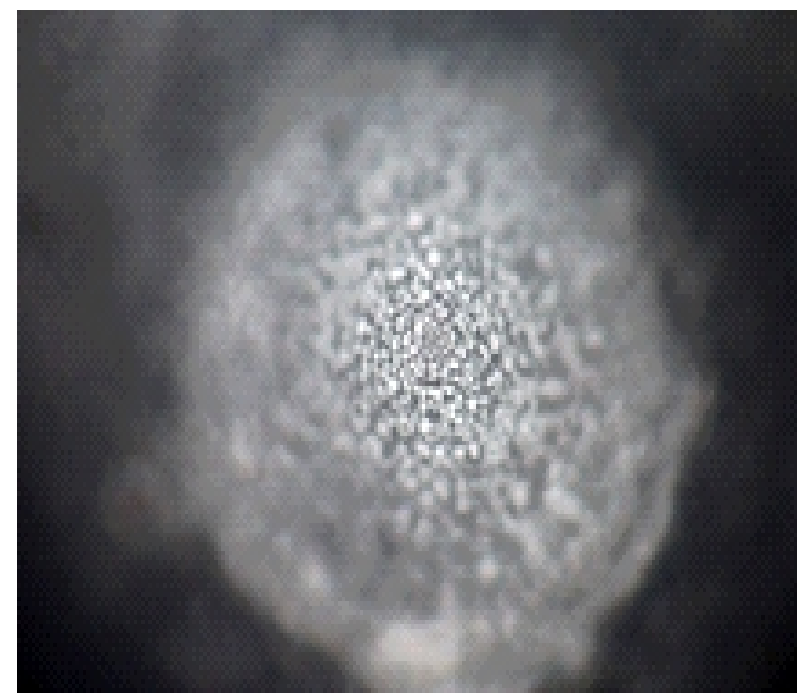
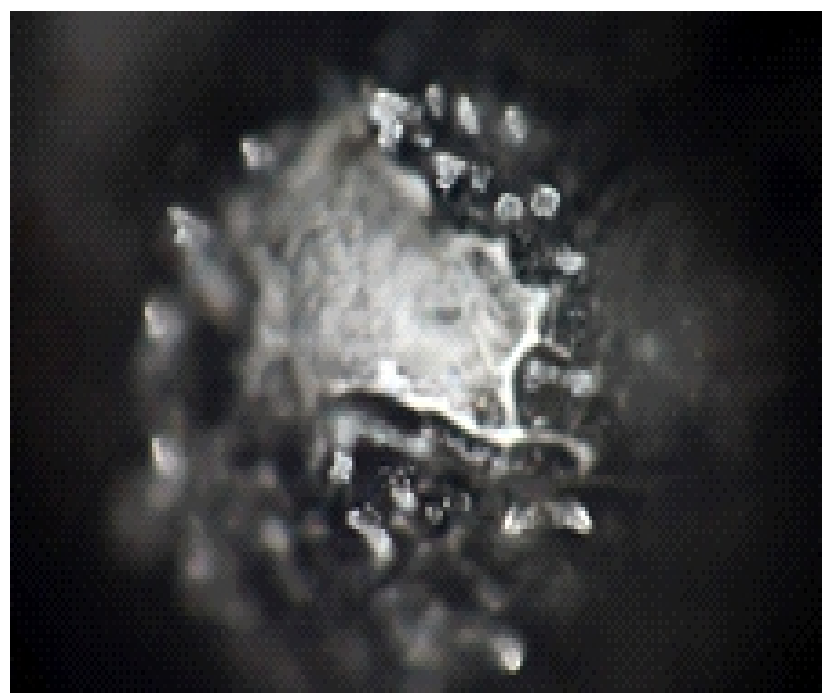


Figure 7. Water Crystal before being exposed to the action of the Smart App. No structural water meaning no water crystals are seen before using the Smart App on the samples of water.

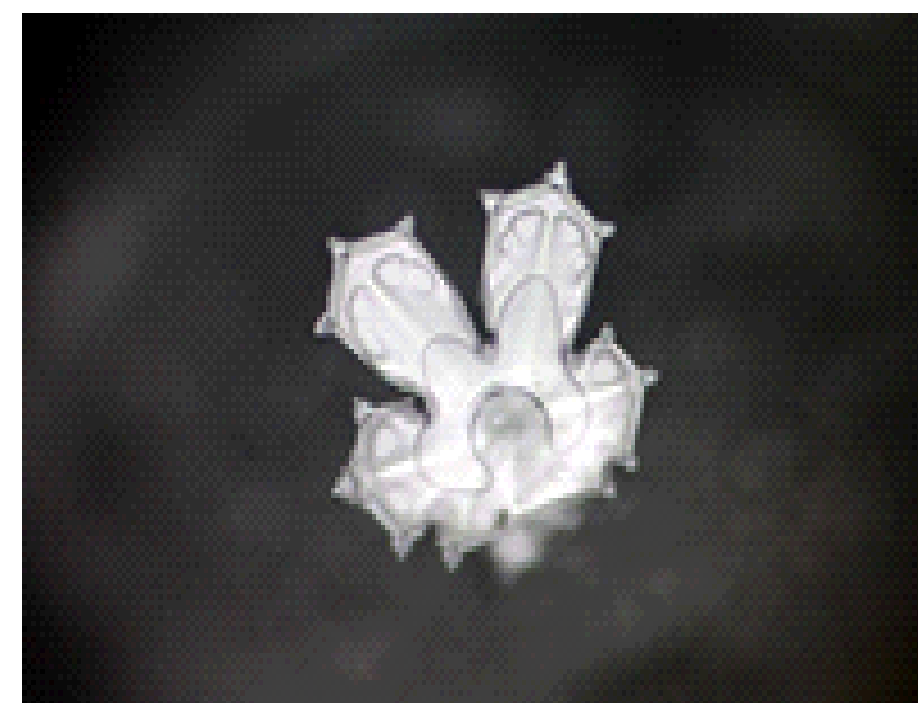


Figure 8. Water Crystals formed after exposure to the action of the Smart App.

The water crystals shown in **figures 7 and 8** were obtained from experiments done at the Hado Institute in Tokyo Japan under the supervision of Hiro Emoto. Tap water was used and prepared for observation under dark field microscopy. The exposure to the action of the Smart App gave a series of hexagonal crystal structures as those shown in figure 9. Such structures did not formed hexagonal structures without the action of the smart App. We have enough evidence to state that the EZ of water is formed by the action of the Smart App. The density of EZ water is greater than that of Bulk non-structured water⁵. This has tremendous implications for cellular hydration and energy management by the cells. The speed of the particle is inter-dependant upon the information that it is carried in the form. Density of information is held within the shape of the water.



Figure 9A. The Biowell report from a test subject BEFORE being subjected to the Chi function of the App. Note the dis-placement of four of the spheres to the right from the center indicating disharmony.

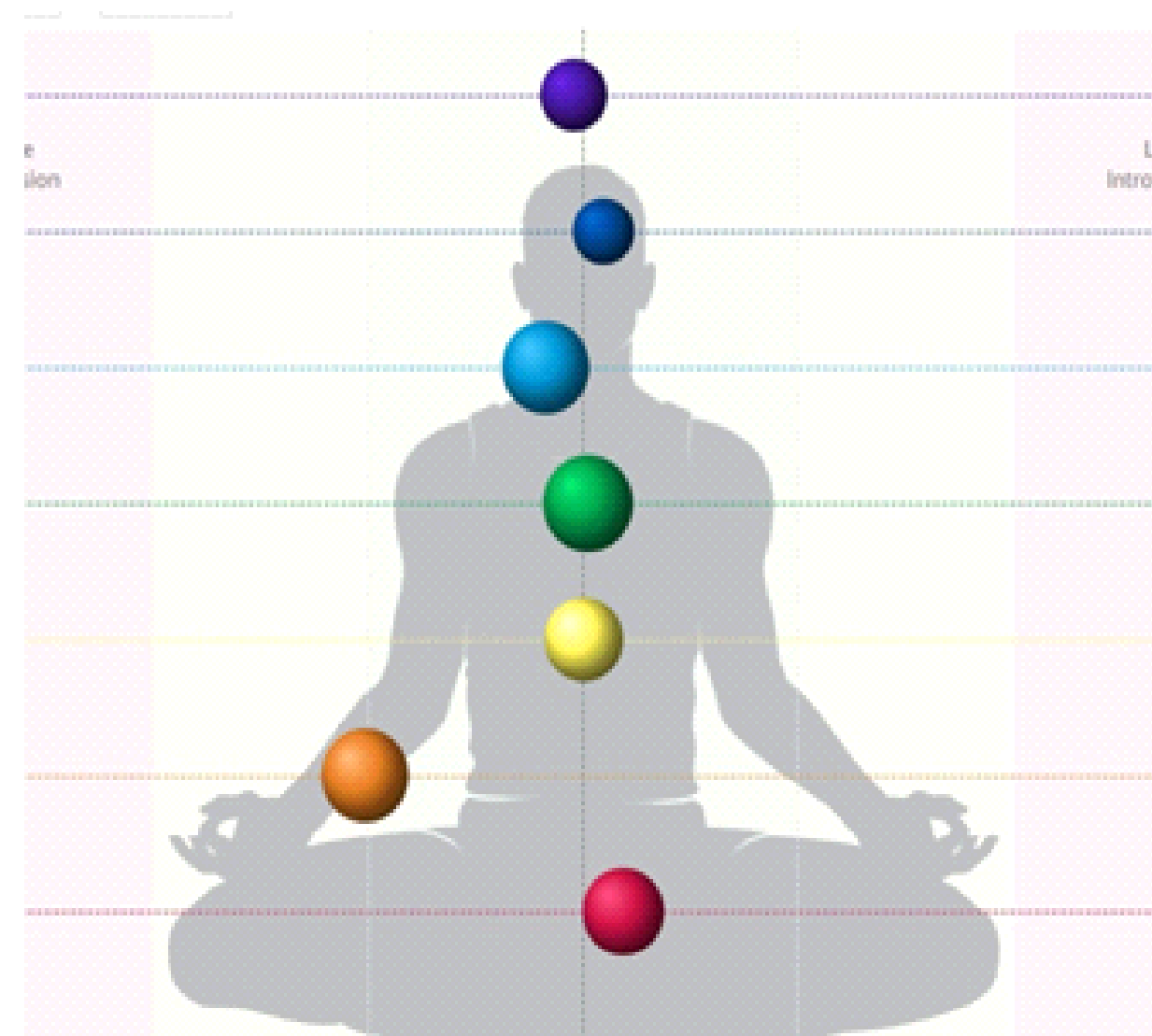


Figure 9B shows the same report from the same subject after receiving the frequencies form the Chi function of the App. In the case the spheres are on or very close to the center axis of the graph, which indicates a harmonic state. Also the sizes of the blue spheres increased indicating that the relative strength of the energy centers increased.

Human tests before and after drinking structured water

The following experiments were preformed under the supervision of Prof Konstantin Korotkov. A glass of water from a freshly opened bottle of commercially available water was processed with the Smart App as per the protocol. 11 people participated in the test.

Every person was tested 5 times with the Biowell and then offered to drink a glass of freshly prepared structured water. After this, the person was measured 5 times. For every person a new bottle was opened.

For the group statistically significant difference $p > 0.001$ was found for the following parameters: Stress (Emotional pressure, figure 9) and Organs balance as seen in figure 10.

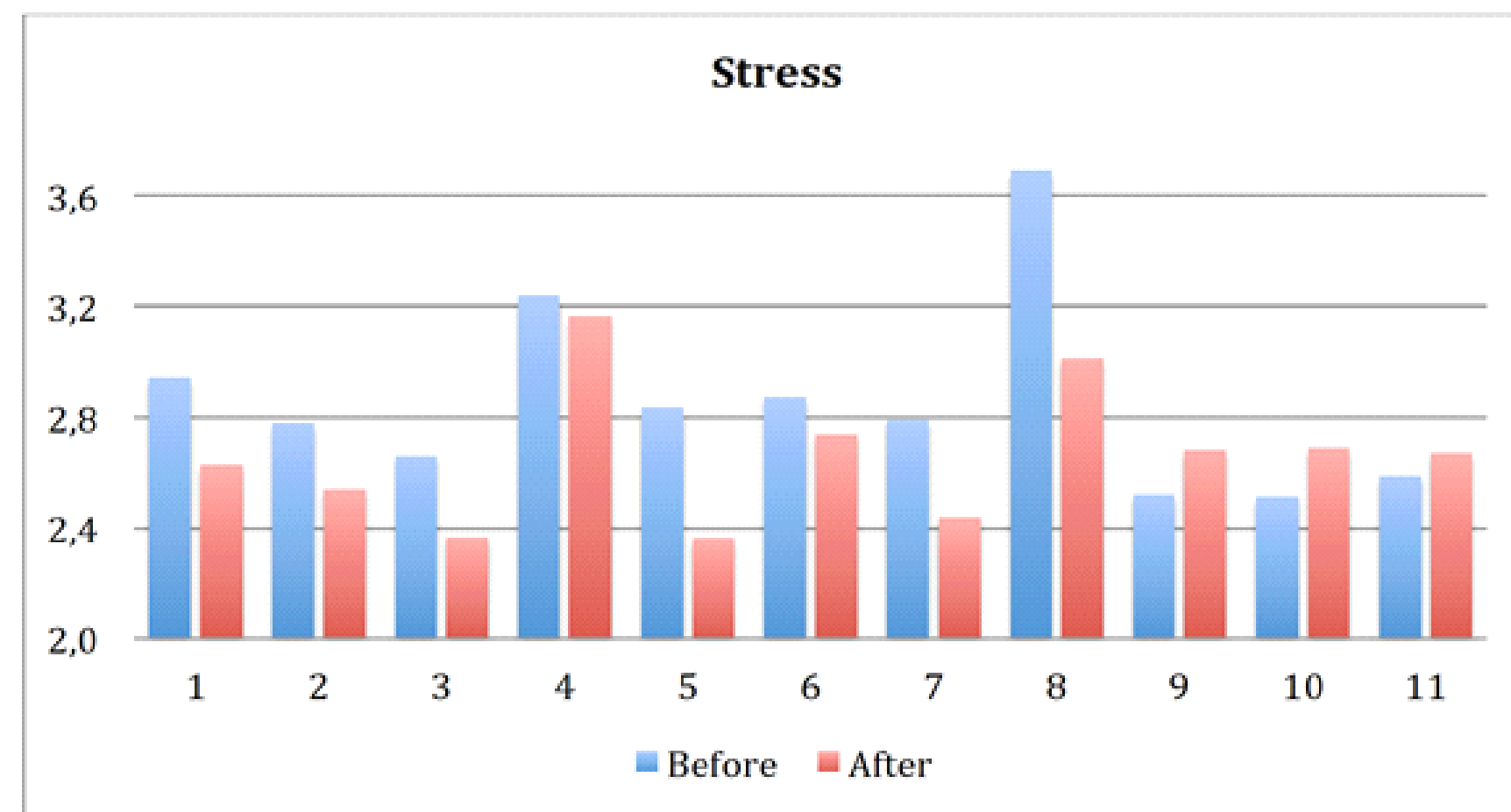


Fig. 10 The Biowell was used in 11 individuals and the level of their stress coefficient was measured. For 8 out of the 11 individuals stress decreased and for 3 people slightly increased during testing. This testifies to the positive effect of structured water.

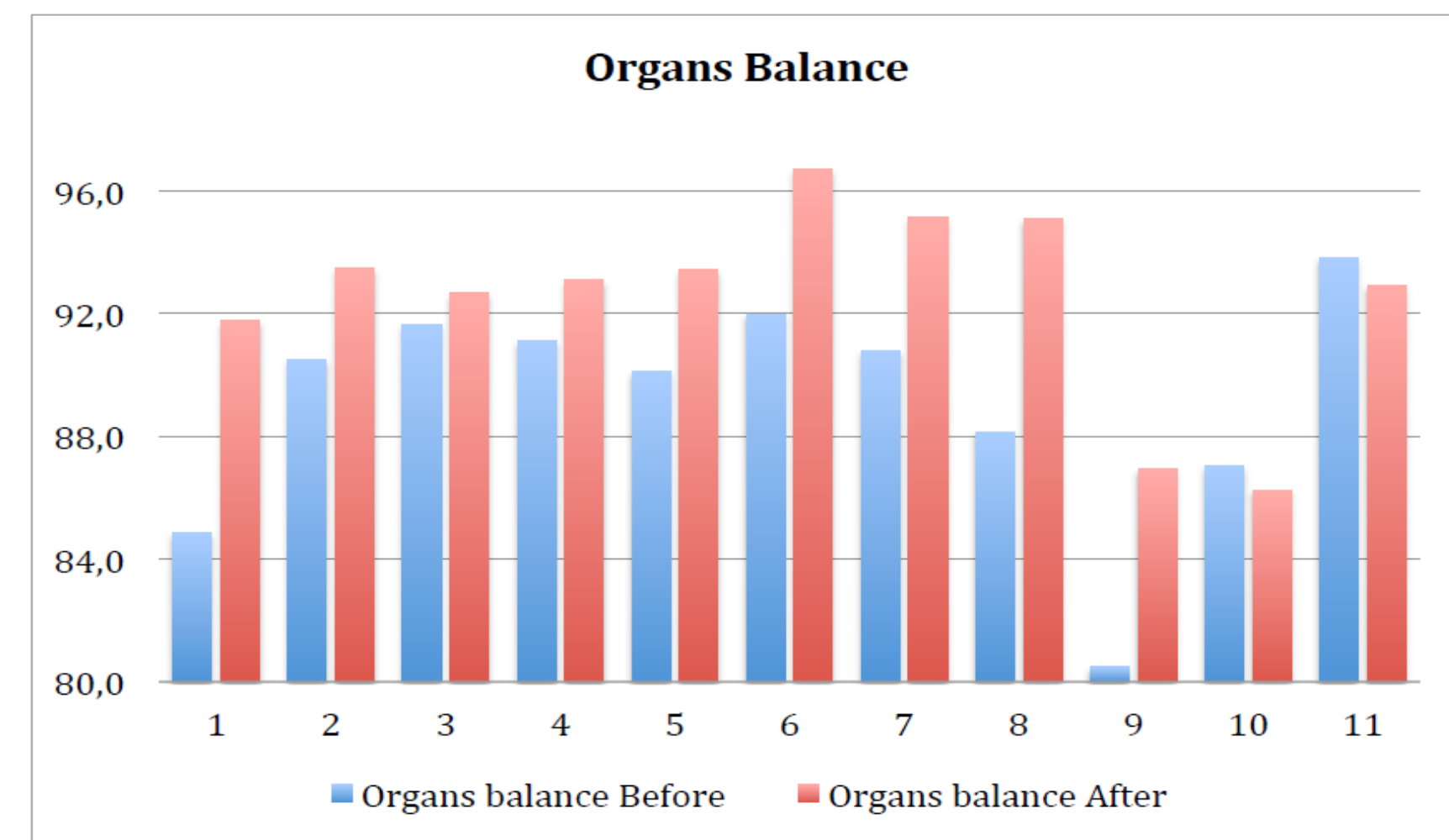


Fig 11. presents Organs Balance for 11 people. As we see, for 9 people, Balance increased and for 2 people slightly decreased during testing. This testifies to the positive effect of structured water.